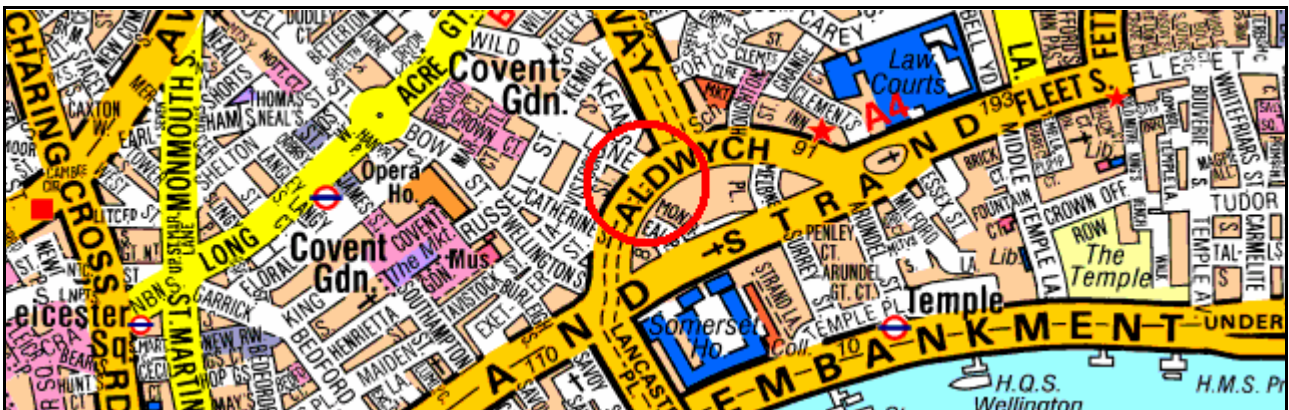




London Street Map

Nokia Communicator version
(Series 80 version)



Installation and User Guide

February 2005 – Versions 1.9x

What to do first

When you purchase London Street Map for Nokia Communicator, you will receive a zip file that contains four files (London1.SIS, London2.SIS, London3.SIS and London4.SIS). Alternatively you may receive the four SIS files separately.

If you received a zip file, unzip the file on your PC because the Nokia Communicator will not be able to install the application from the zip file directly. The four SIS files that are included have a total size of approximately 20 MB. When installed on your Nokia Communicator's memory card the space required will be approximately 24 MB.

The files you need are

- London1.SIS
- London2.SIS
- London3.SIS
- London4.SIS

London1.SIS contains the application. The other three SIS files contain the maps.

The License Key

London Street Map is protected by a license key mechanism to prevent unauthorised copies.

When you purchase the software online you will receive your license key **automatically via email**. There can be a few hours delay between your purchase and the time you receive the license key email. In any case the delay should never be more than 24 hours.

If for some unfortunate reason you do not receive the key within 24 hours, please email support@lumisoft.net with your purchase details. A possible reason is that you may have misspelled your email address on your order form. In order for Lumisoft to be able to verify your purchase details, please include in your email any purchase details you have, such as from which website you bought the product, when did you buy it and what is your phone's IMEI code. Please include also your contact details (name, email address).

Technical Support

If you need to contact us for technical support or license key questions, we kindly ask you to contact us via email. We have found out that it is much more efficient for both parties to communicate via email: passing around 15 digit long IMEI code numbers, email addresses and answering technical questions is always easier by email than by phone. If you contact us by phone we will still have to ask you to email your details, therefore the best way is to contact us by email. We do encourage you to contact us if you have any technical problems. Practically all possible installation problems have already been experienced by someone else and we will probably have a solution to your question straight away. Please do include as much information as possible, such as what phone type you are

installing the software to, do you have a memory card, what size is the memory card, is there free space on the memory card, if you do get a problem what exactly is it? An error message? Or something else? By including all information you can think of you are more likely to get the answer you need straight away.

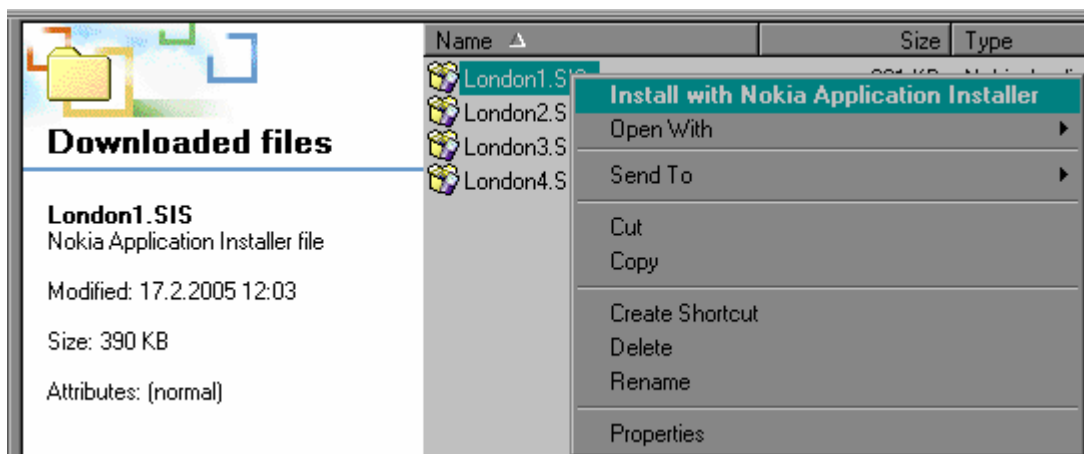
How to Install London Street Map

There are several ways to install London Street Map. The easiest is perhaps to install using Nokia Application Installer. The other ways are to use a memory card reader or to download the SIS files wirelessly to your Nokia Communicator.

Installation using Nokia Application Installer



You need to install the four SIS files one by one. Start the installation process from the Windows File Manager. Find the file London1.SIS and then select it with a click of the right mouse button. If you have installed Nokia PC Suite a context menu such as the one pictured below should appear:

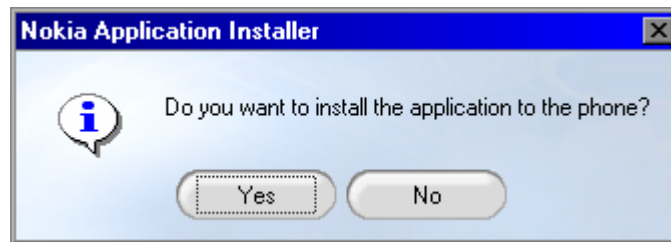


A context menu appears when you right click (ie. click the file using the right mouse button) to a file in Windows File Manager. If you have Nokia PC Suite installed you should be able to select '**Install with Nokia Application Installer**'. Double clicking the file London1.SIS is another way to do the same thing.

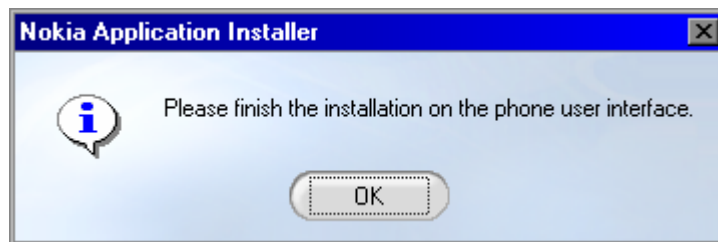
Before selecting the option '**Install with Nokia Application Installer**' make sure that your Nokia Communicator is properly connected to your PC. Use the connection method that you usually use (either the cradle and the USB cable, or Bluetooth, or Infrared).

[Note: You may also start the Nokia Application installer from the task bar.]

Nokia Application Installer will start and the following window will pop up:

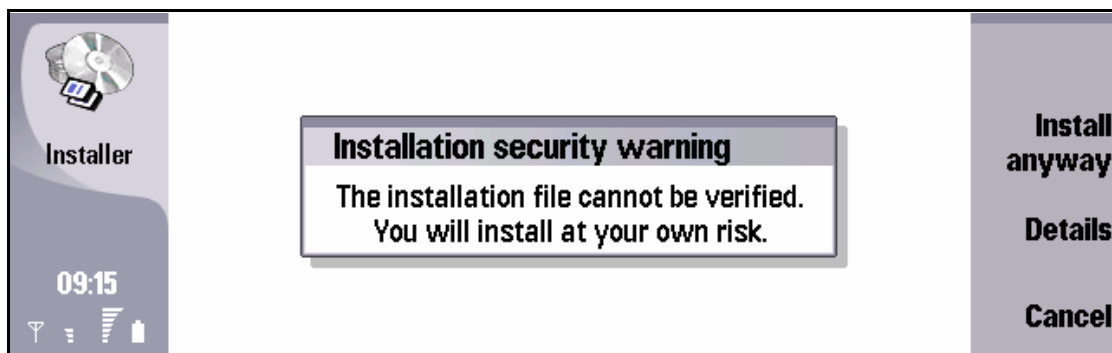


Answer yes. Nokia Application Installer will then start sending the file to your phone. This is indicated by a progress bar at the bottom of the Application Installer and a text saying '**Installing**'. When the file has been sent over to the phone the following message will come up on your PC:

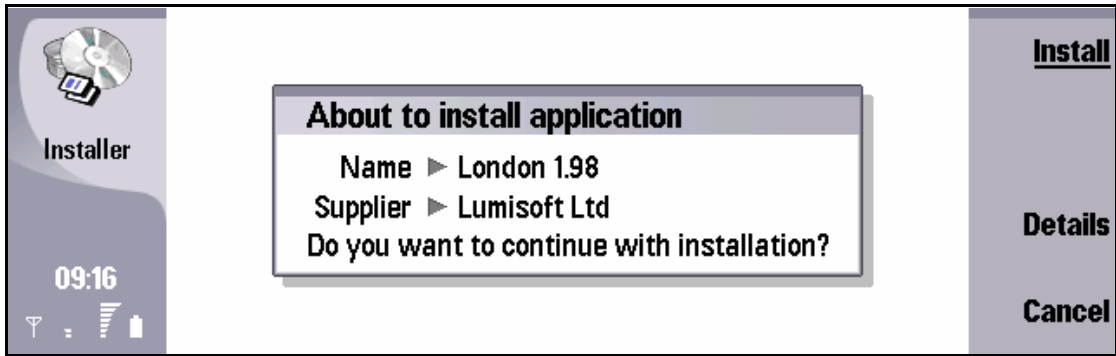


This means that you have to open your Nokia Communicator. You may now take it off the cradle because the file transfer has been done at this point (but just for one SIS file so far).

The first view that you will see looks shocking, but there is no need to worry:

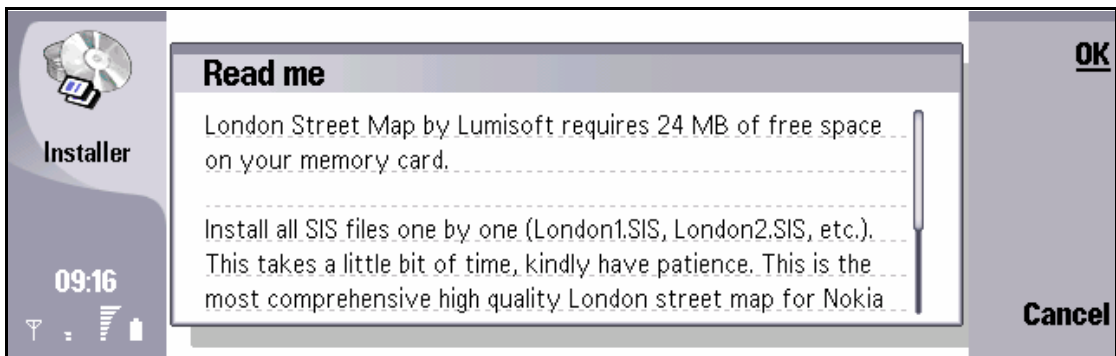


Select **Install anyway**

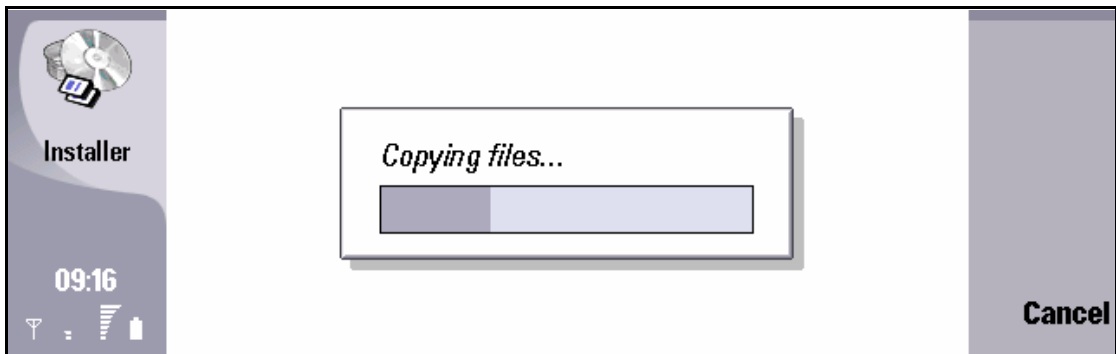


Select **Install**

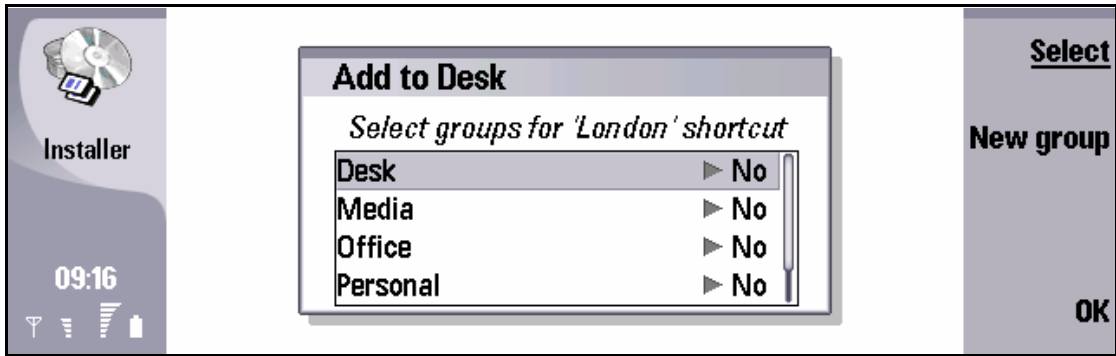
If a previous version of London Street Map exists you will see a warning. Select 'Replace' to overwrite the older version, if there is one.



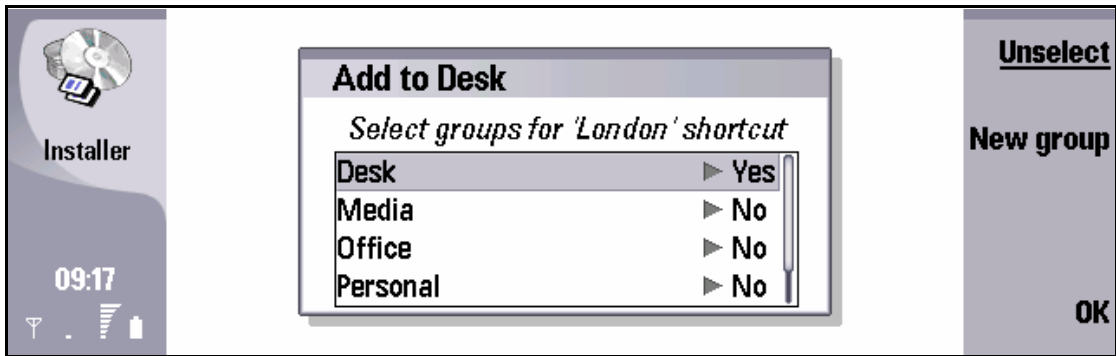
A short introduction will be shown and then file copying will start after you press **OK** to continue



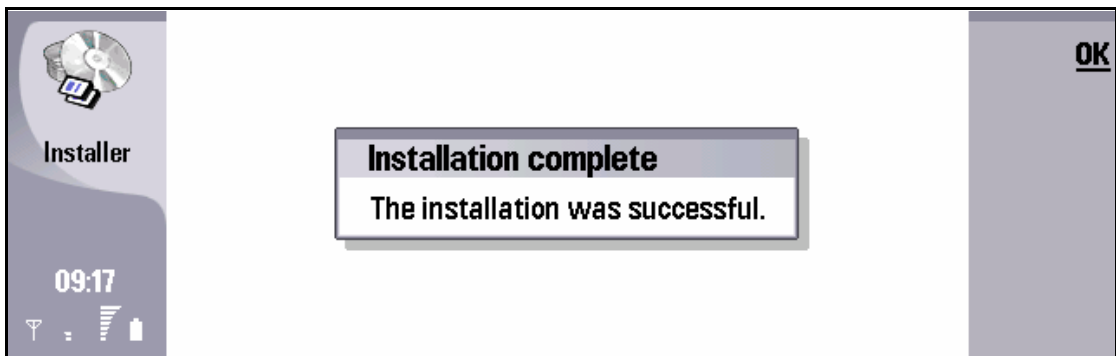
Files are now copied from the Nokia Communicator's main memory to the memory card. Note! The files are not deleted from the Nokia Communicator automatically. **You will need to delete the SIS files manually from the Communicator's main memory later.**



Installation is nearly completed. Choose 'Desk Yes' by pressing **Select**.



This selection makes London Street Map appear on your main menu. Finish by pressing **OK**.

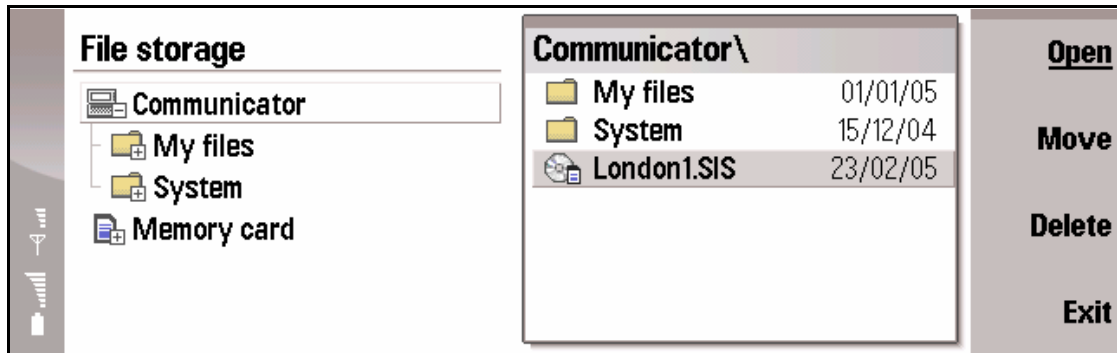


Success... but we are not quite there yet ...

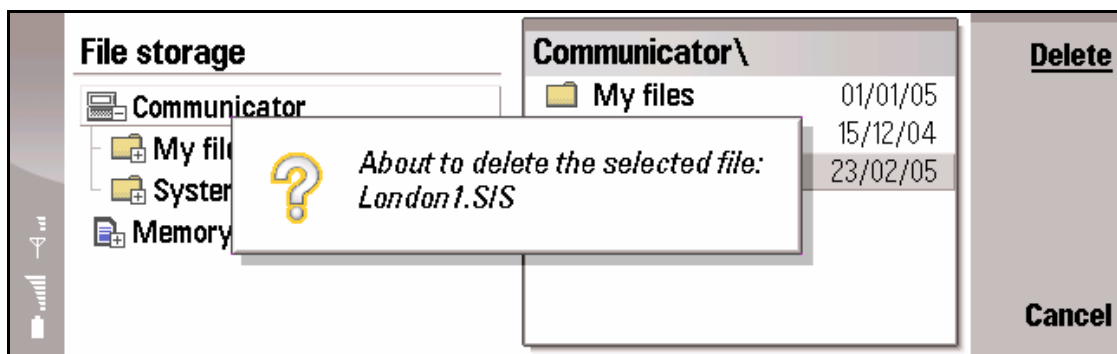
The Nokia Application Installer has not cleaned up the SIS file we just installed. We need to delete it. First start the **File Manager**. The File Manager can be found in the **Office** folder on your Communicator's Desk.



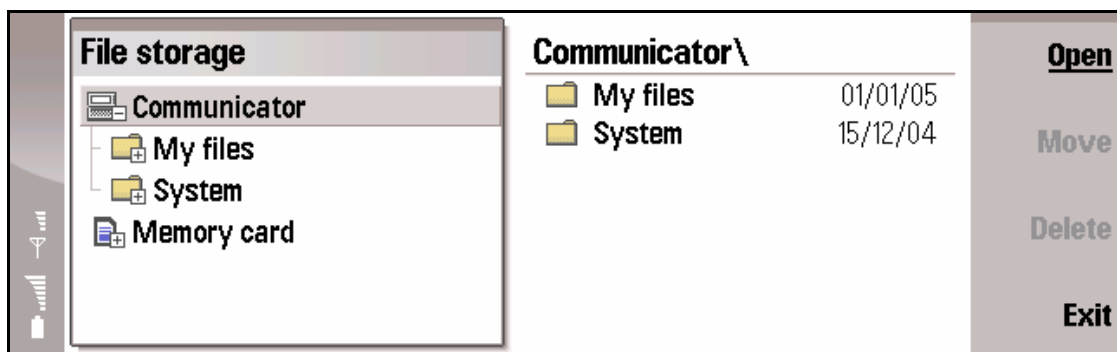
The London1.SIS file can be found from the root of you Nokia Communicator, see picture below:



This is unacceptable. If you install all the four SIS files of London Street Map they would use 20 MB in total. You don't want to waste 20 MB of your precious main memory space by having a second copy of these files! The redundant files must be deleted.



Select London1.SIS (and in due time the same for London2.SIS, London3.SIS and London4.SIS) and **delete it**. It is not going to be needed here!



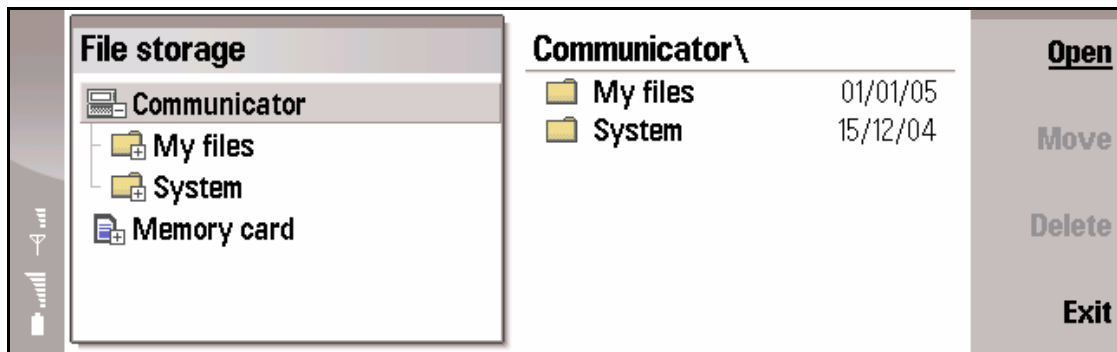
This is better. Now there are no unnecessary London-SIS files on the **Communicator\'\'** root directory wasting space.

Then the same for London2.SIS, London3.SIS and London4.SIS

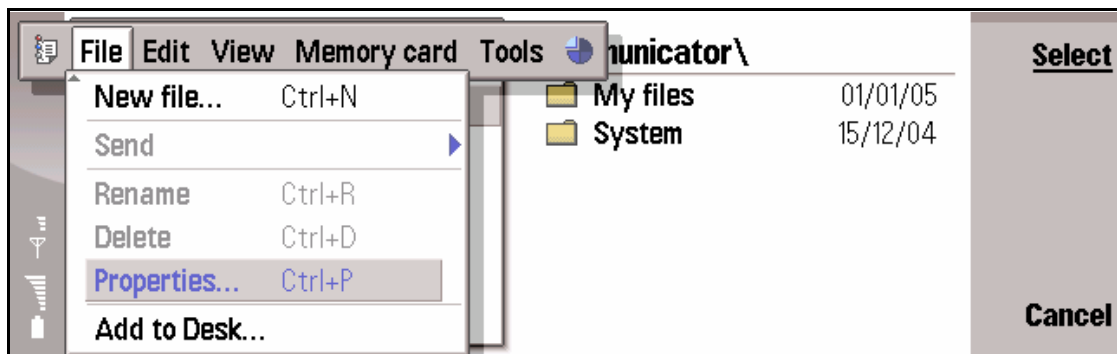
The process for installing the map files is identical to installing the application, except that the map files will appear on the list of installed applications as a separate entry called **LondonMaps**. Installing the map files takes longer than installing the application as the file sizes are over 10 times larger than London1.SIS.

The important thing that you need to be aware of, is that the installation process will require as much space from the main memory than the SIS files size is. This means that the Communicator needs to have around 10 MB of free space or more. If you have just 10 MB then remember to delete each SIS file (map file) after installing it (see preceding section). Installation will fail if your Communicator does not have enough free memory.

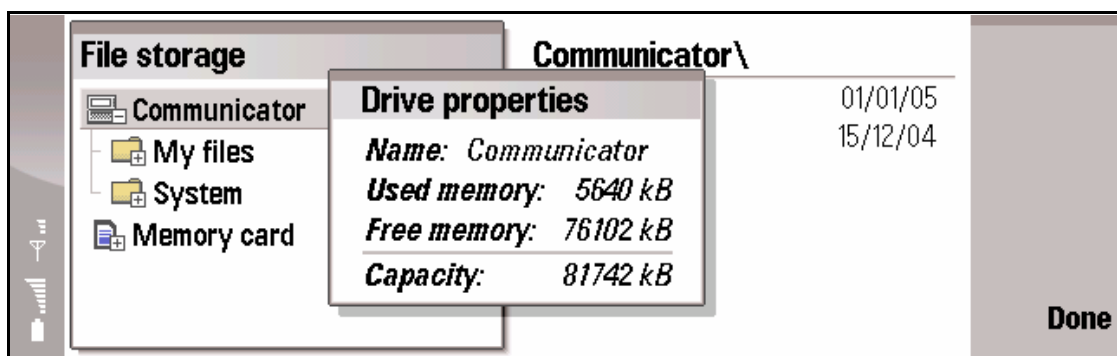
To see the amount of main memory the your Communicator has, start the File Manager application. Select **Communicator** as shown in the picture below:



Communicator (on the left side) is selected...



Select **Properties** (or press Ctrl + P)



If you see this much free memory then you are lucky. You ought to have a minimum of 8 MB, preferably more in order to make it through the SIS installation process. If you have less memory you need a memory card reader (see text below).

If you don't have enough space there are three alternatives to fix the problem.

1. Free memory by moving images, messages or any large files to the memory card even if just temporarily

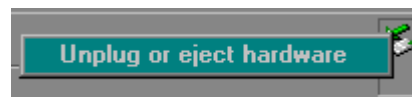
2. Use a memory card reader to copy the files directly to the memory card **[recommended option]**
3. Contact Lumisoft at support@lumisoft.net for a low memory installation alternative. The low memory installation alternative consists of a large number of SIS files. Each SIS file is smaller requiring less memory during installation. The downside is that there is more files to install.

Installation Using a Memory Card Reader

Our advice: if you don't yet have a memory card reader.. buy one! Memory card readers are not expensive and they are very useful. If you are using a new laptop check whether it has a built-in memory card reader as they are more and more common. The reader is very small so you might not have noticed it.

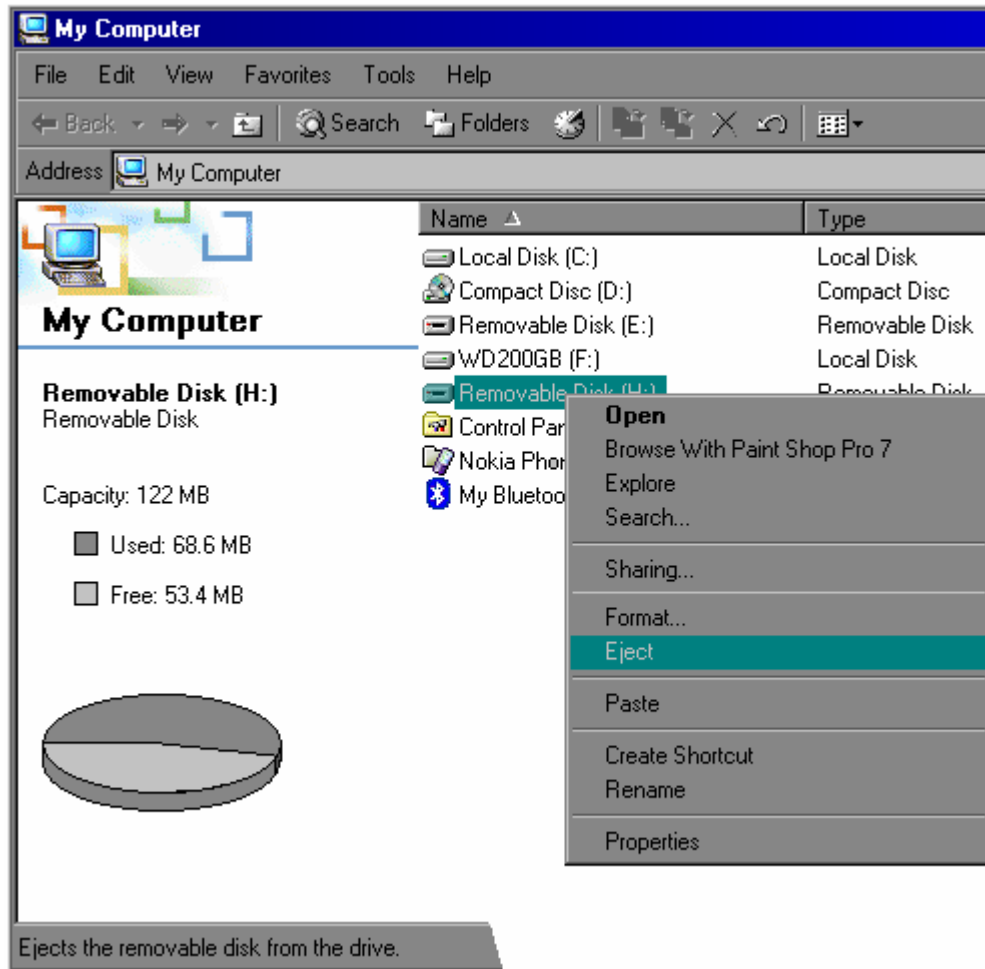
Memory card readers are good because they let you see the contents of your memory card just like you would see the contents of a disk drive or a hard disk. This is very convenient for making backups to your PC, for instance.

You can copy files to a memory card much faster than any other way. The only thing you need to be careful about is that you don't take the memory card off the reader too quickly. If you are using Windows 2000 you have to be not just careful but practically paranoia. Never take the memory card off just like that, but always use either '**Unplug or eject hardware**' by clicking the device icon on the Windows taskbar with the right mouse button (see picture below)

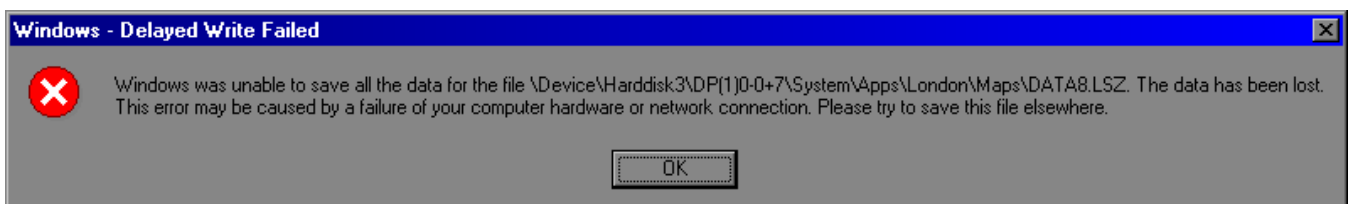


Unplug the memory card from the task bar

or by selecting **Eject** the memory card from My Computer, see picture below:



If you don't take these precautions you can easily get the card corrupted, at least in Windows 2000. Waiting helps but it does not guarantee that everything has been written to the card. As a warning, see what could happen:



After this message your memory card may be corrupted. You can recognise a corrupted memory card by looking at the memory card using a card reader (if you have one) or using the File Manager of the Communicator. A corrupted card has one or several directories that look like non-sense. The non-sense directories can not really be recovered. Save any files that you need from the directories that look undamaged and then format the card. This can be a long and painful process – avoid it. Just follow the instructions shown above.

How to install London Street Map using the Memory Card Reader

It is only of a limited help to copy SIS files to a memory card and then to install them. To really see the speed benefit of a memory card reader, you need to download the ready-to-copy installation package from Lumisoft's website. The download link is

<http://www.lumisoft.net/london/fastinstall-S80.zip>

(case sensitive)

Download the file and unzip it on your PC. You will get a directory called System, with a subdirectory and a sub-subdirectory. Copy the whole System folder structure including subdirectories to the memory card. To the root of the memory card.

If you are copying this to a new empty memory card no warnings will appear. If you copy to a card you are currently using you should see a warning from Windows telling you that directories will be overwritten if you continue. You can go past this warning since the only directory where anything will be written is

`\System\Apps\London`

Nothing else will be overwritten.

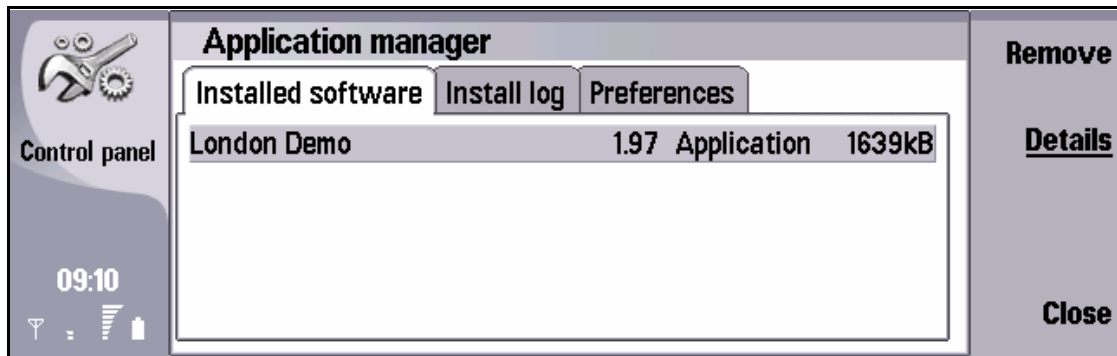
After copying this to the memory card, unplug or eject the memory card (see instructions above) and then put the memory card in your Nokia Communicator and close the back cover (otherwise the memory card will not be acknowledged). London Street Map will automatically appear on your Desk.

The only difference in installing the application this way compared to installing it from the SIS files (the hard way) is that you will not see London Street Map on the list of applications that can be uninstalled. Uninstall would have to be done from the File Manager by just deleting the directory `\System\Apps\London` from your memory card.

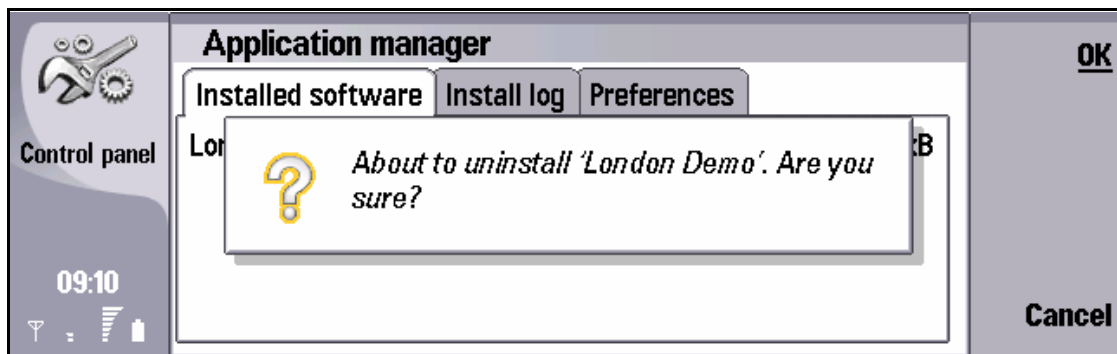
Uninstalling London Street Map Demo Version

If you have installed London Street Map demo before purchasing London Street Map you will probably want to uninstall it after installing London Street Map. Installing London Street Map will not overwrite the demo version.

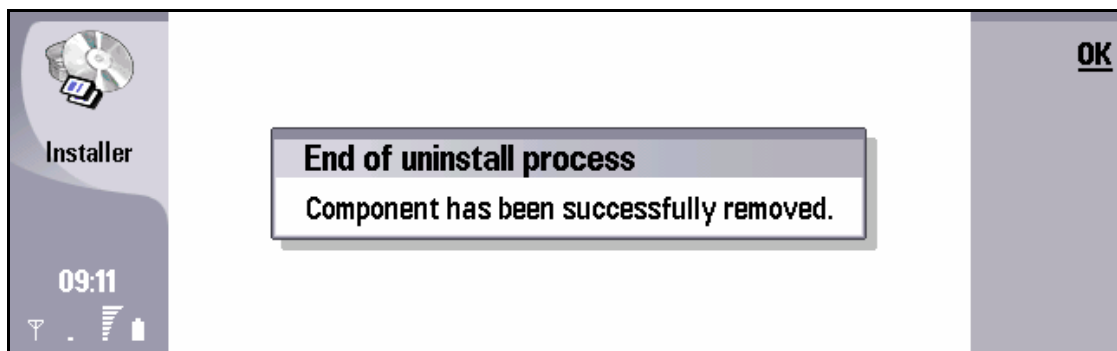
To uninstall go to Control Panel and select '**Application Manager**'. Select London Street Map Demo from the '**Installed software**' list and select '**Remove**'.



Select London Demo then press **Remove**



Confirm by pressing **OK**

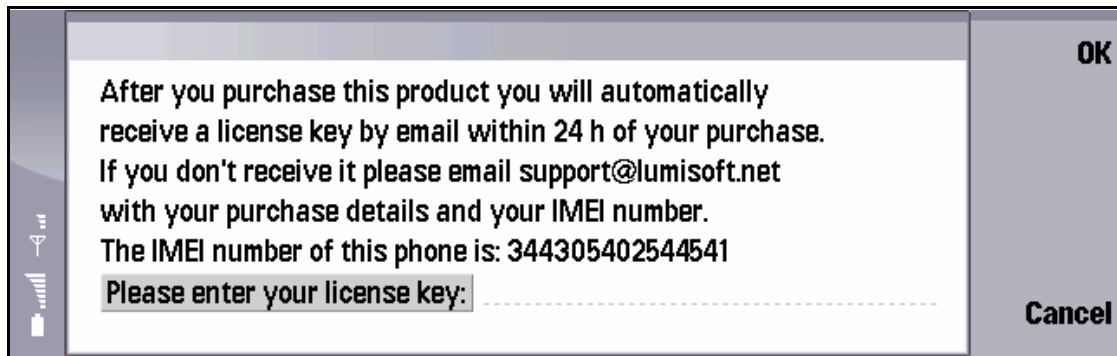


London Street Map Demo version has been removed.

Using London Street Map

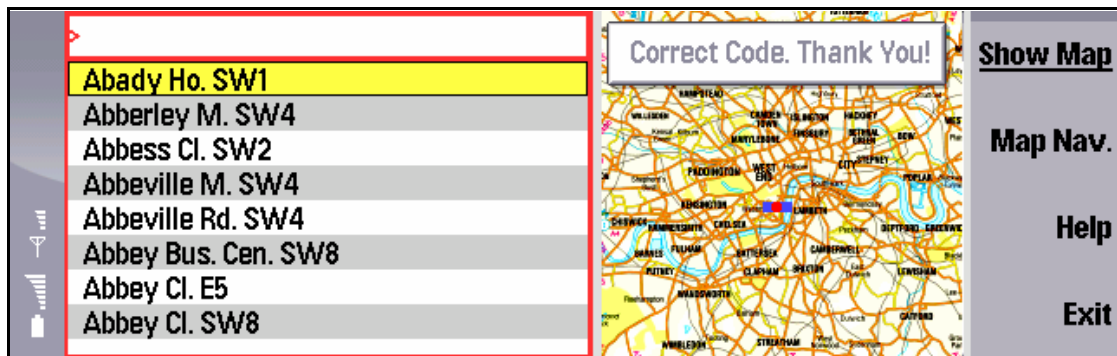
It is very simple to use London Street Map. There are no complex menus or settings. Just type the name of the street you want to see, scroll up and down the list of streets if needed and then press Enter.

But before you get to that point the formalities have to be taken care of... the **license key!** This is the first screen you will see



You will receive your license key automatically by email. It usually takes less than one hour to receive the license key, but it can take a bit more as there are several steps and even humans involved. If you are very unlucky you will receive it next day.

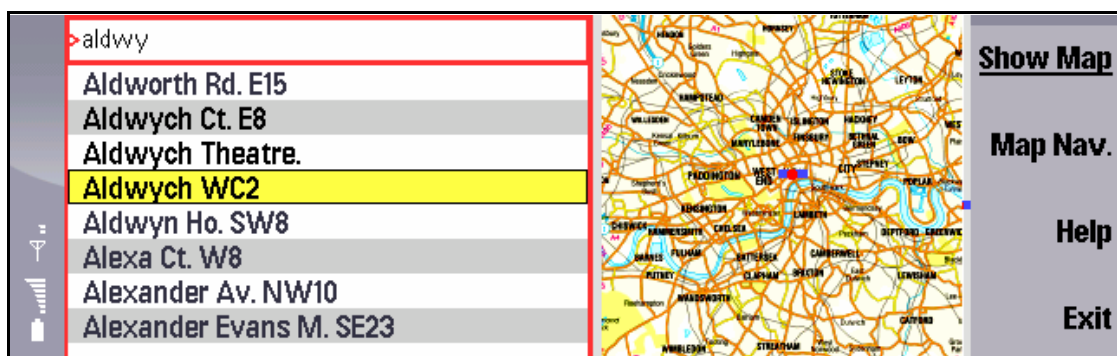
Enter the key you have received and then press **OK**.



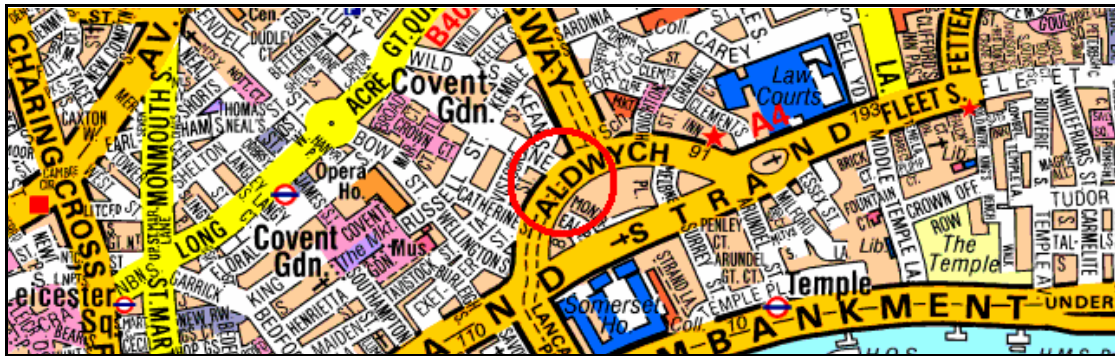
This is the start up screen. Two ways to start using it: type a street name or just navigate on the large scale map on the right side and then open the detailed map.

To navigate on the right side minimap (keymap) press **Map Nav.** Move the blue cursor (which is equivalent to the size of one screen view) to the approximate location you want to see and then press Enter (or **Show Map**).

To find a street just start typing the street name. If you happen to be on the Map.Nav. side, press the same button again to get back to Street Search.

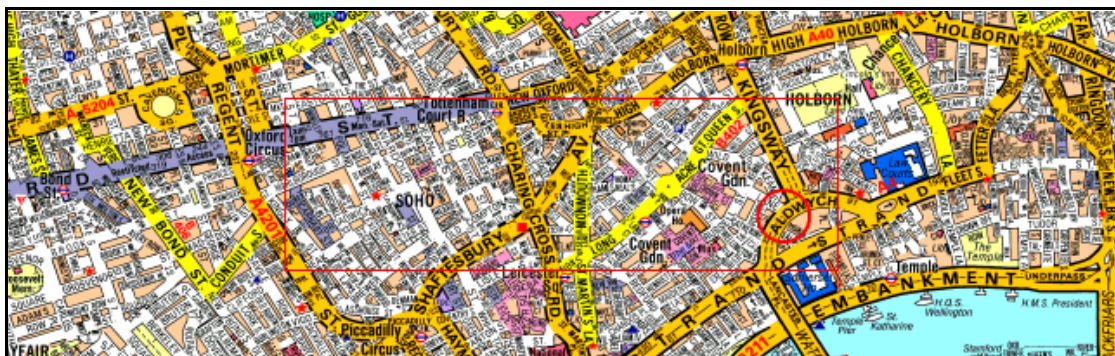


We started typing ALDWYCH. No need to type the complete name. We have just entered **ALDWY** and then used the arrow keys to move down to **Aldwych WC2**



Press Enter and the map is instantly visible!

Move around using the arrow keys



Zoom out by pressing the second button from the top on the right side of the screen. While in zoom out mode you may also move around by using the arrow keys.

Press **Enter** or **Show Map** (the top button) to go back to street search.

| | | |
|--|--|---|
|  <p>LUMISOFT</p> <p>Type the first letters of a street name, or place of interest (e.g. Big Ben). You may browse the street list with up/down arrow keys. Press SHOW MAP or ENTER to see the detailed map. On the detailed map use the arrow keys to move around. Presss Enter or Esc or Show Map to make a new street search.</p> <p>All rights reserved. No part of this application or its maps may be reproduced in any form or by any means without permission in writing from Lumisoft Limited. The copyright in the maps and other information is owned by Geographers' A-Z Map Company Limited. For detailed data license agreement see www.lumisoft.net</p> <p>© Copyright 2004 - 2005 Lumisoft Limited</p> |  <h2>London Street Map</h2> <p>www.lumisoft.net/london/</p> | <p>Show Map</p> <div style="border: 1px solid red; padding: 2px; text-align: center;"> <p>Zoom +/-</p> </div> <p>Use the zoom button while on the detailed map</p> <p>Exit</p> |
|--|--|---|

The help screen

We hope you will enjoy this product. Please visit our website to see when new features and new city maps are available. The website is www.Lumisoft.net

This software has been created by Lumisoft Limited and is copyright protected. The software technology including the *Lumizoom algorithm* and *Lumizip compression technology* are proprietary technologies of Lumisoft Ltd.

The application is owned and sold by Lumisoft Limited through various channels. For more information see www.lumisoft.net or contact us by email at support@lumisoft.net or by writing to

Lumisoft Ltd.
Cubix House
34 Candlemas Lane
Beaconsfield, Buckinghamshire
HP91AF, United Kingdom

Data Licence Agreement



The copyright in the maps and other information ("Data") is owned by Geographers' A-Z Map Company Limited ("A-Z") or its licensors. Maps are based upon Ordnance Survey mapping with the permission of the Controller of Her Majesty's Stationery Office from whom A-Z has a licence to make the Data available to you.

You are permitted:

- a) to load Data into and use it on a single PDA which is under your control for personal and Domestic purposes only;
- b) to transfer the Data from one computer to another provided it is used on only one computer at any one time;
- c) to make up to 3 copies of the Data for back-up purposes only in support of the permitted use. The copies must reproduce and include A-Z's copyright notice;
- d) to transfer the Data (complete with all its associated documentation) and the benefit of this Agreement to another person provided he has agreed to accept the terms of this Agreement and you contemporaneously transfer all copies of the Data you have made to that person or destroy all copies not transferred. If any transferee does not accept such terms then this Agreement shall automatically terminate. The transferor does not retain any rights under this Agreement in respect of the transferred Software.
- e) to make a reasonable number of copies of the Data using the Software's built in print facility (if applicable) for your own personal and domestic purposes only.

You are not permitted:

- a) to use the Data otherwise than for your own personal or domestic purposes.
- b) to print out the Data otherwise than for your own personal or domestic purposes.
- c) to load the Data on to a network server for the purposes of distribution to one or more other computer(s) on that network or to effect such distribution (such use requires a separate licence).
- d) except as expressly permitted by this Agreement and save to the extent and in the circumstances expressly required to be permitted by law, to rent, lease, sub-license, loan, copy, modify, adapt, merge, translate, reverse engineer, decompile, disassemble, or create derivative works based on the

whole or any part of the Data or its associated documentation or use, reproduce or deal in the Data or any part thereof in any way.

Term

This Agreement is effective until you terminate it by destroying the Software and its documentation and the Data together with all copies. It will also terminate if you fail to abide by its terms. Upon termination you agree to destroy all copies of the Software and its documentation and the Data, including any Software stored on the hard disk of any computer under your control.

Ownership

A-Z or its licensors shall at all times retain ownership of the Data and all subsequent copies thereof regardless of form. This Agreement applies to the grant of the licence contained herein only and not to the contract of sale.

Warranties

A-Z warrants that (a) the Data is substantially similar to such maps and information in the corresponding print version and whilst A-Z endeavours to keep its map and index databases complete, accurate and up-to-date, all such data is supplied by A-Z on an "as is" basis and A-Z makes no warranty, and has no responsibility to you to ensure, that the Data is complete and/or accurate and/or up-to-date

The express terms of this Agreement are in lieu of all warranties, conditions, undertakings, terms and obligations implied by statute, common law, trade usage, course of dealing or otherwise all of which are hereby excluded to the fullest extent permitted by law.

A-Z does not warrant that the Software or Data will meet your requirements or that the operation of the Software will be uninterrupted or error-free or that defects in the Software will be corrected. You shall load and use the Software and Data at your own risk and in no event will A-Z be liable to you for any loss or damage of any kind (except personal injury or death resulting from A-Z's negligence) including lost profits or other consequential loss arising from your use of or inability to use the Software or Data or from errors or deficiencies in the Software or Data whether caused by negligence or otherwise except as expressly provided herein. In no event shall A-Z's liability exceed the amount paid by you for the CD or download.

Law

This Agreement shall be governed by English law and you and A-Z agree to submit to the non-exclusive jurisdiction of the Courts of England. If you have any questions concerning this Agreement please write to the address below.

© Geographers' A-Z Map Company Limited 2003
Fairfield Road, Borough Green, Sevenoaks, Kent. TN15 8PP, United Kingdom



This product includes mapping data licensed from Ordnance Survey® with the permission of the Controller of Her Majesty's Stationery Office. © Crown Copyright 2003. Licence number 100017302