

London Street Map for Symbian Phones

I. INTRODUCTION

This software is produced by Lumisoft Limited. The copyright of the software belongs to Lumisoft Limited and the copyright of the maps belongs to Geographers' A-Z Map Company Ltd. Please see the DATA LICENSE AGREEMENT at the end of this document.

For more information about this software, please see www.Lumisoft.net/london/ or contact support@lumisoft.net

This software is compatible with all Symbian Series 60 mobile phones that have a memory card and 7.5 MB of free space (100 sqkms version), or 24.2 MB of free space (400 sqkms version). The trial version needs about 1 MB.

II. INSTALLATION INSTRUCTIONS

Please follow these steps. More detailed descriptions on the following pages.

1. Turn your phone OFF
2. Turn your phone ON while keeping the ABC button (also known as pen button) pressed until the phone asks for the PIN code
3. Install the application (file LondonS60-1.SIS)
4. Install the maps (files LondonS60-2.SIS ... LondonS60-7.SIS) 100 sqkms version
or install the maps (files London2-400.SIS ... London17.SIS) 400 sqkms version
[See read detailed instructions below to avoid problems]
5. Enter the registration code

III. HOW TO GET THE REGISTRATION CODE

Lumisoft Ltd creates a unique registration code for you. Normally the registration code is sent to you automatically within 24 hours of the purchase of your software. Lumisoft Ltd. receives a notification of each purchase from Nokia Softwaremarket and sends the registration code based on this. However, you need to make sure that you have given Nokia Softwaremarket the correct (15-digit) IMEI code of your phone, and your correct email address. Otherwise there could be a delay. If you do not receive your registration code within 24 hours, please send an email to support@lumisoft.net to request your registration code.

To get your IMEI code type (or "call") the following numbers: ***#06#**

CAUTION! Please note that the installation is a very sensitive process! It is easy to get an 'out of memory' error while installing so please read the following instructions carefully.

Before starting

The software is divided into eight SIS files (Symbian installation files) due to the large memory requirement of the maps. The 400 sqkms version needs even more: 17 files! There is a risk of getting out of memory or 'low memory' errors which can become VERY DIFFICULT to fix, therefore please follow these instructions carefully.

Why is it possible to get out of memory errors?

Even if you have lots of space in your memory card or even an empty memory card (!) you may get an out of memory error. **This is due to the fact that the installation always copies the complete SIS file into the main memory first** before copying it to the memory card. For this reason you must have as much free main memory as possible. Do not have any other applications active (best way to ensure this is to reboot your phone), and do not have memory consuming items such as pictures or too many messages on the main memory. Both picture and messaging applications allow you to transfer data from the main memory to the memory card.

How to free main memory – and how to conserve main memory?

1. If you transfer SIS files to your phone through your inbox (ie. through infrared or Bluetooth)... **always transfer only one SIS file at a time. Install it and then DELETE it from your inbox.** Transfer the next SIS file only after successfully deleting the previous SIS file from your inbox. If you can't delete a SIS file from your inbox, restart the phone and try again. Do not try to install the next SIS file if you have been unable to delete the previous SIS file.
2. Delete as many messages as you can – or transfer your messages (even if temporarily) to your memory card.
3. Restart your phone by keeping the pen button (also known as ABC button) pressed while you start the phone, keep it pressed continuously until the phone asks for the PIN code. This will make sure that no other software is automatically started when rebooting your phone.

How to check the amount of free memory?

Open Menu->Tools->Manager
(in Nokia 6600 move left or right to select Device memory or Memory card)
Options-> Memory Details -> Device memory
Options-> Memory Details -> Memory Card

IV. Installation Alternative 1: Using Nokia PC Suite

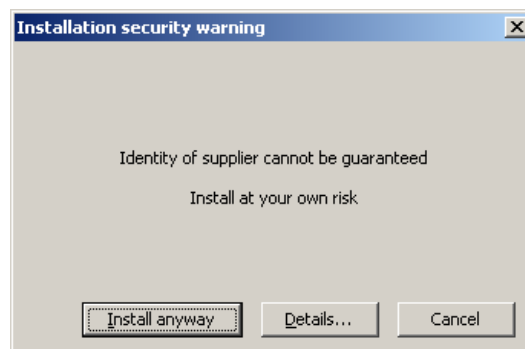
If you have Nokia PC Suite installed on your PC, and you have a working connection to your phone, then installation is very simple. Just double click on the SIS files, one by one starting with file 1 (LondonS60-1.SIS or London1-400.SIS).

Follow the instructions on screen and you're done! (It will take some time though... please be patient, we are stretching the limits of present technology with this large map application!)

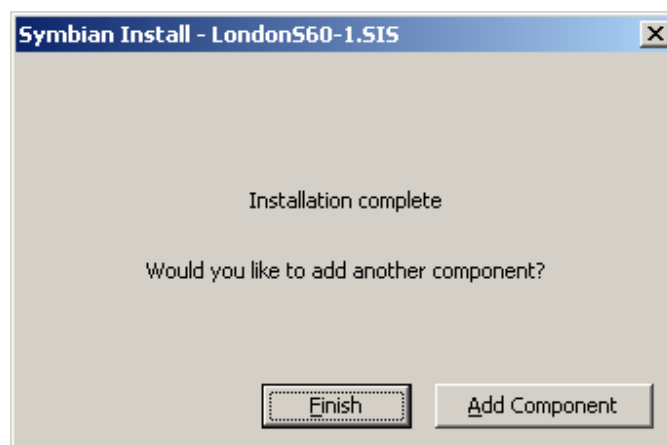
You may now proceed to section: **Installation Complete – What next?**



Double clicking on LondonS60-1.SIS (or London1-400.SIS for 400 sqkms version) starts the installation process.



A weird-looking warning will appear. Ignore it. Select Install anyway. Many other questions will come up. Unfortunately all of them need someone to click the OK or Next. Sorry, we are not able to change this behaviour.



After completing the first SIS file, you can conveniently select “Add Component” to carry on with the next one. Please be patient, this process is rather long!

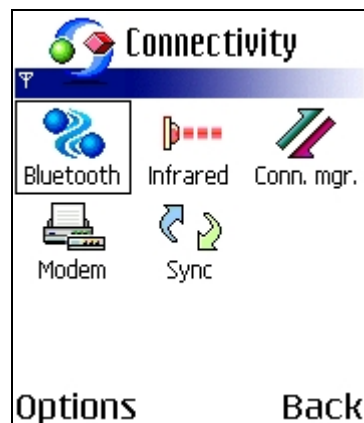
V. Installation Alternative 2: Transfer Files to Your Inbox Using Infrared or Bluetooth

To install London Street Map by using either infrared or Bluetooth send one SIS file to your phone first. Open the incoming message, select 'install' and follow the instructions. When ready, go back to the inbox, delete the message, and continue with the next file. Please make sure that you delete each message containing an installation file after installing it. Otherwise you will get a low memory or out of memory error very easily.

Step by step instructions: How it looks like on a Nokia 6600 (it can be a little different on different phone models)



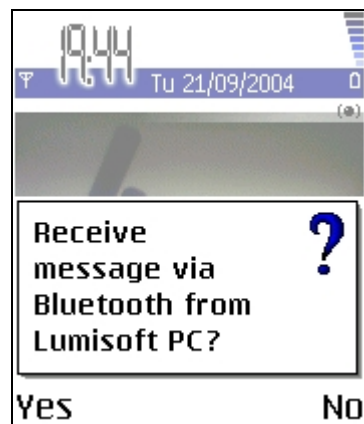
From the main menu open Connect.



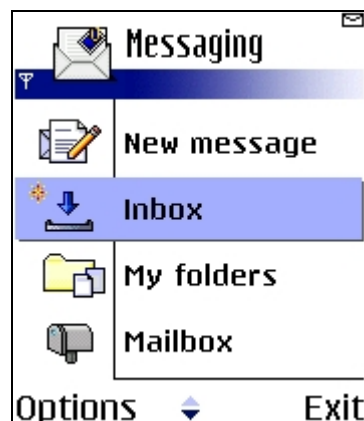
Select Bluetooth



Set Bluetooth On and visible to all

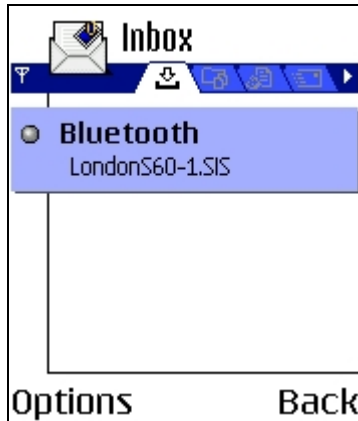


Send the first SIS file from your PC

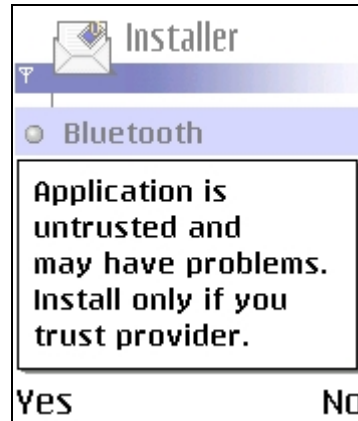


When the SIS file is received Show

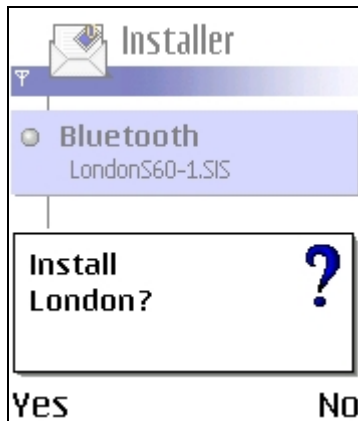
Or open Inbox and open message



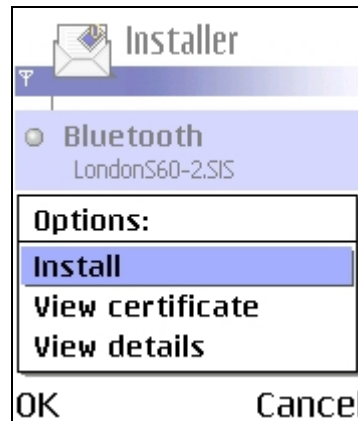
The message shows the SIS file name



A Symbian warning. Ignore it, press Yes



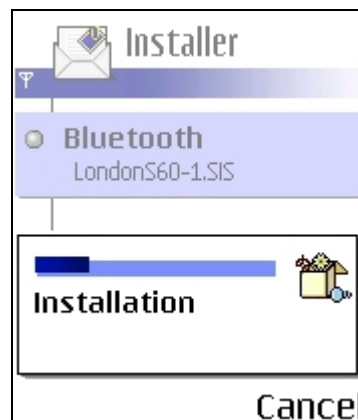
Well, yes, install London, please do



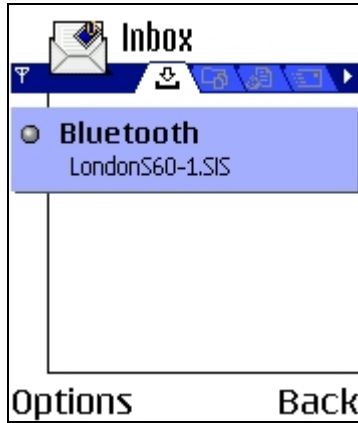
Still unsure? I think we just said yes... well, we have to select OK now



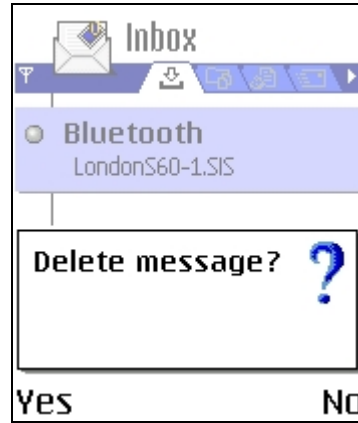
Finally something relevant. Please Read. This text has somethings to say.



After reading press OK and installation will start.



When installation is ready you will be thrown back here. Now **delete** this SIS file by pressing C



Yes, please delete it and then continue with the next SIS file, until you have finished with all 8 files, or all 17 files (400 sqkms version).

VI. Installation Alternative 3: Using a USB Memory card reader (best)

If you have a memory card reader, you can do this installation extremely quickly. All other installation methods take significantly longer.

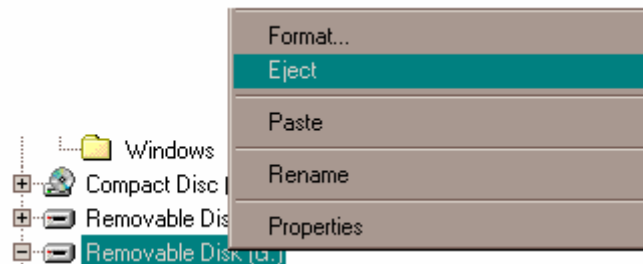
Step 1: Let us know that you have a memory card reader by sending an email to support@lumisoft.net

Step 2: We will send you a link from where you can copy a “ready-to-copy” file structure

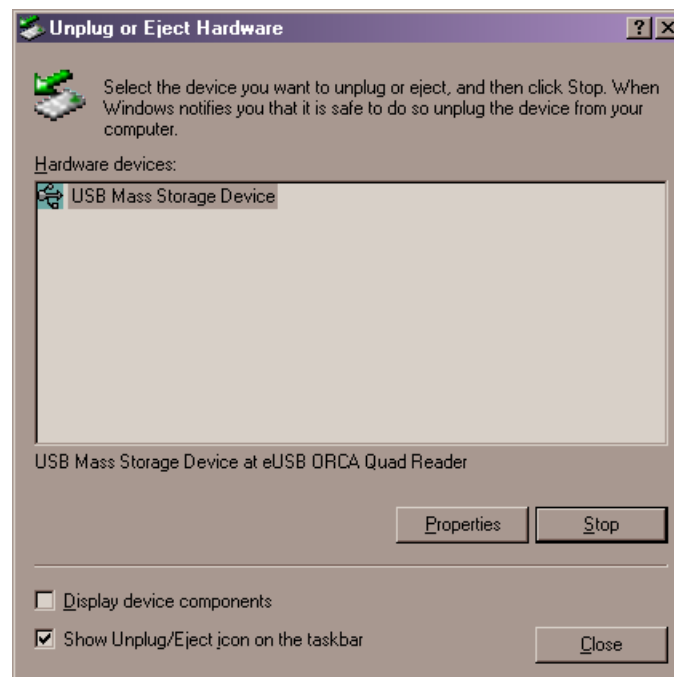
Step 3: Download this file (a zip file). Unzip it.

Step 4: Copy the files and the subdirectories to your memory card. Put the memory card back to your device and you are ready. Then go to **Installation Complete – What next?** Section of this document.

Caution: Especially with Windows 2000 it is very very easy to make your memory card corrupted. Even if copying of files appears to have been completed, there is a 50/50 chance that it is not! If you then take the memory card off the reader, all your files could be lost. In order to avoid this, you need to either ‘Eject’ the card, or ‘Unplug the USB reader from Windows’. To Eject the card use your mouse right click to point to the card drive and select Eject.



Ejecting the Memory card is crucial (at least with Windows 2000) to avoid memory card problems



An alternative to Ejecting the memory card is to stop the device (the USB memory card reader) from the tiny icon on the taskbar

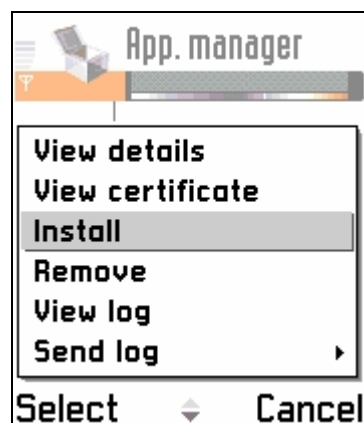
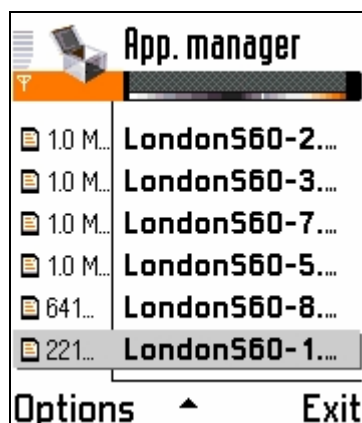


VII. Installation Alternative 4: Copy Files to the Memory Card

If you can copy SIS files to the memory card either by using PC Suite, a third-party file manager or by using an external USB memory card reader you can start the installation of SIS files from your phone's application manager. Note that the application manager has slightly different names in different phone models.



In some phones such as the Nokia NGage (pictured) you can find the manager from the Tools-submenu. The application manager is called 'Manager' in this case.



The application manager will show you both uninstalled SIS files on the memory card, and also installed applications. In the Nokia Ngage the uninstalled SIS files on the memory card are shown with a small memory card icon on the left margin.

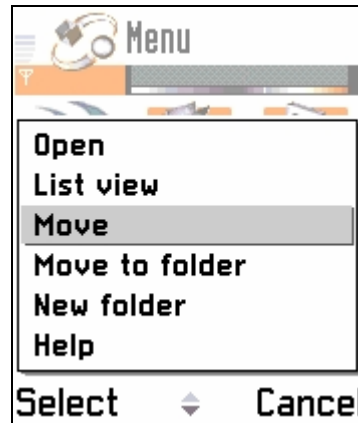
Please install LondonS60-1 first, and when completed promptly delete it. After that install LondonS60-2 and then delete the SIS file etc. until you have completed the installation of all SIS files.

VIII. Installation Complete – What next? Registration Code

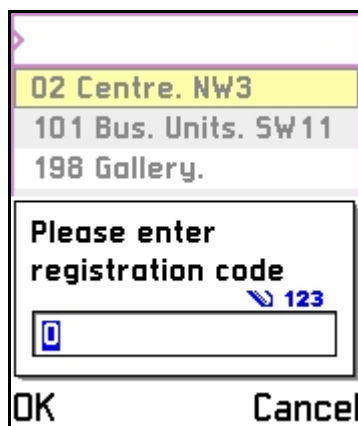
When installation is completed, you will see 'London' on your phone's main menu. Start it and enter the registration code.



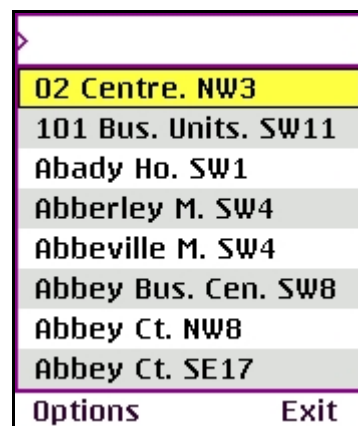
London will be on your Menu, usually at the end



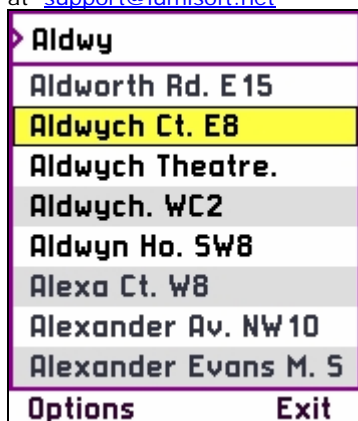
If you want you can move the icon to any location on the Menu



When you start the application, you need to enter the registration code. You will receive this registration code automatically by email within 24 hours of your purchase, if you have given your phone's IMEI code correctly at the time of purchase. If you do not receive this, please email us at support@lumisoft.net



When the registration code is accepted this is what you'll see. Type a street name or just type OK...



You don't need to type the complete street name, just enough to get to the correct line. Then press OK



This takes you to an intermediate large scale screen where you see the location of your street indicated by a blue circle. You can move to a different location if you like. To continue press OK

DATA LICENCE AGREEMENT

The copyright in the maps and other information ("Data") is owned by Geographers' A-Z Map Company Limited ("A-Z") or its licensors. Maps are based upon Ordnance Survey mapping with the permission of the Controller of Her Majesty's Stationery Office from whom A-Z has a licence to make the Data available to you.

You are permitted:

- to load Data into and use it on a single PDA which is under your control for personal and Domestic purposes only;
- to transfer the Data from one computer to another provided it is used on only one computer at any one time;
- to make up to 3 copies of the Data for back-up purposes only in support of the permitted use. The copies must reproduce and include A-Z's copyright notice;
- to transfer the Data (complete with all its associated documentation) and the benefit of this Agreement to another person provided he has agreed to accept the terms of this Agreement and you contemporaneously transfer all copies of the Data you have made to that person or destroy all copies not transferred. If any transferee does not accept such terms then this Agreement shall automatically terminate. The transferor does not retain any rights under this Agreement in respect of the transferred Software.
- to make a reasonable number of copies of the Data using the Software's built in print facility (if applicable) for your own personal and domestic purposes only.

You are not permitted:

- to use the Data otherwise than for your own personal or domestic purposes.
- to print out the Data otherwise than for your own personal or domestic purposes.
- to load the Data on to a network server for the purposes of distribution to one or more other computer(s) on that network or to effect such distribution (such use requires a separate licence).
- except as expressly permitted by this Agreement and save to the extent and in the circumstances expressly required to be permitted by law, to rent, lease, sub-license, loan, copy, modify, adapt, merge, translate, reverse engineer, decompile, disassemble, or create derivative works based on the whole or any part of the Data or its associated documentation or use, reproduce or deal in the Data or any part thereof in any way.

Term

This Agreement is effective until you terminate it by destroying the Software and its documentation and the Data together with all copies. It will also terminate if you fail to abide by its terms. Upon termination you agree to destroy all copies of the Software and its documentation and the Data, including any Software stored on the hard disk of any computer under your control.

Ownership

A-Z or its licensors shall at all times retain ownership of the Data and all subsequent copies thereof regardless of form. This Agreement applies to the grant of the licence contained herein only and not to the contract of sale.

Warranties

A-Z warrants that (a) the Data is substantially similar to such maps and information in the corresponding print version and whilst A-Z endeavours to keep its map and index databases complete, accurate and up-to-date, all such data is supplied by A-Z on an 'as is' basis and A-Z makes no warranty, and has no responsibility to you to ensure, that the Data is complete and/or accurate and/or up-to-date

The express terms of this Agreement are in lieu of all warranties, conditions, undertakings, terms and obligations implied by statute, common law, trade usage, course of dealing or otherwise all of which are hereby excluded to the fullest extent permitted by law.

A-Z does not warrant that the Software or Data will meet your requirements or that the operation of the Software will be uninterrupted or error-free or that defects in the Software will be corrected. You shall load and use the Software and Data at your own risk and in no event will A-Z be liable to you for any loss or damage of any kind (except personal injury or death resulting from A-Z's negligence) including lost profits or other consequential loss arising from your use of or inability to use the Software or Data or from errors or deficiencies in the Software or Data whether caused by negligence



or otherwise except as expressly provided herein. In no event shall A-Z's liability exceed the amount paid by you for the CD or download.

Law

This Agreement shall be governed by English law and you and A-Z agree to submit to the non-exclusive jurisdiction of the Courts of England.

If you have any questions concerning this Agreement please write to the address below.

© Geographers' A-Z Map Company Limited 2003 Fairfield Road, Borough Green, Sevenoaks, Kent. TN15 8PP

This product includes mapping data licensed from Ordnance Survey® with the permission of the Controller of Her majesty's Stationery Office. Crown Copyright 2003. Licence number 100017302.